

Welcome to the September issue of the Holocentric newsletter

www.holocentric.com

RESTRUCTURING FOR GROWTH

After leading the company for many years, taking modelling to a vast range of applications and establishing a loyal customer base, **John Forrest** is stepping aside as CEO of Holocentric. John will remain a Director and Chairman of the company and will continue to be involved with Holocentric, particularly in pursuing strategic consulting and Corporate Governance opportunities.

Bruce Nixon moves from the COO role to become CEO and will lead the company through significant expansion over the coming months. This will require improved productisation of existing capability, the release of new products and the expansion of the sales and consulting teams. There are a number of new recruits and internal appointments which will help to realise these goals:

Charu Agarwal becomes Product Manager. Charu was originally involved with Holocentric as a customer and, some time later, joined Holocentric as a Consultant. She has a lot of hands-on experience with Modeler and will be responsible for transforming great technology into products which more clearly address customer needs.

Miles Hamilton-Green and **Stephen Price** have joined as Senior Sales Executives, based in Canberra and Sydney respectively. Miles and Stephen have many years experience in delivering to customer expectations in large organisations.

Naren Baliga and **Walter Tran** have joined the consulting team, based in Sydney. Both have hands-on experience with Holocentric Modeler and will be working closely with customers to implement Business Performance Improvement and System Requirements & Fulfillment solutions.

Further, **May Ling Leong** has joined as a Consultant in Sydney and **Lisiane Barao-Macleod** as a Consultant in Canberra on 17 September.

We plan to expand the consulting team over the coming months to provide a greater capability and depth of experience.

USER GROUP MEETINGS—OCTOBER

Come along and see:

Modelpedia and Holocentric Modeler 6.0 Alpha release.

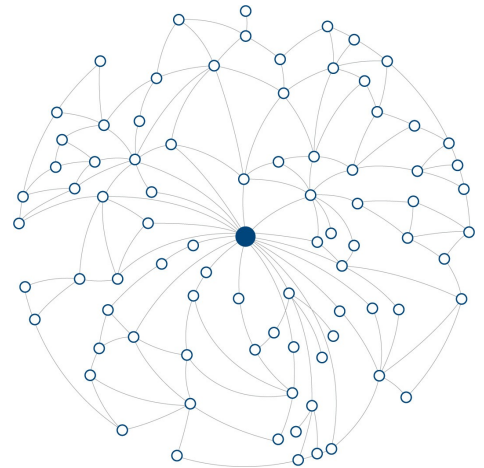
CTO, Derek Renouf will, with his usual flair, demonstrate the much-anticipated Modelpedia product, will show the synchronization with Modeler 6.0 and the new Publishing Portal.

Holocentric customer, United Group, will present on their integrated approach with Holocentric Modeler and how this links through to value streams and strategy

Canberra **14 October**

Sydney **15 October**

Further details and invitations will be sent in week commencing 22 September.



CEO—BRUCE NIXON

Inside this issue:

Consultant's Top Tip	2-3
Training	2
Seminar Details	3
5.2.1 Features	4
Naren Baliga, Senior Consultant	4



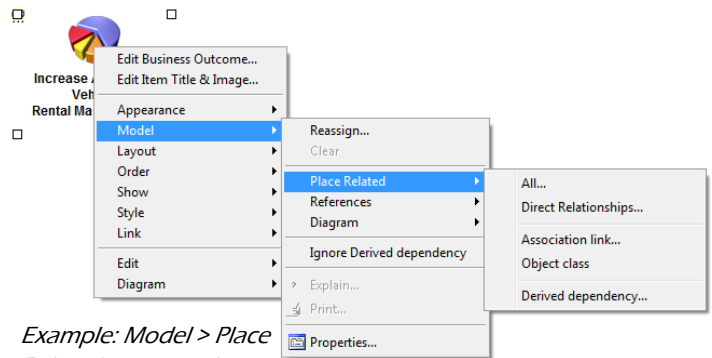
Shape Your Future

CONSULTANT'S TOP TIP - CHARU AGARWAL

By using **Model > Place Related** you can build visually rich diagrams showing the traceability and relationships between items in your model.

Start by creating a new General Diagram. Right-click on the root Catalog and select **New Diagram > General Diagram**. Select an item by using the "Item Selection" toolbox icon and click "Place" to drop the item onto the diagram. Alternatively you may navigate to the item from the Catalog or Types view and then drag and drop it onto the diagram. Make sure that the item is in focus and then right-click on the item and select **Model > Place Related > All...** All items that are related to the item in focus will appear in a pop-up dialog. You can use the Type Filter field to filter items of a particular type from the list, such as Actor or Process Step.

Using Place Related

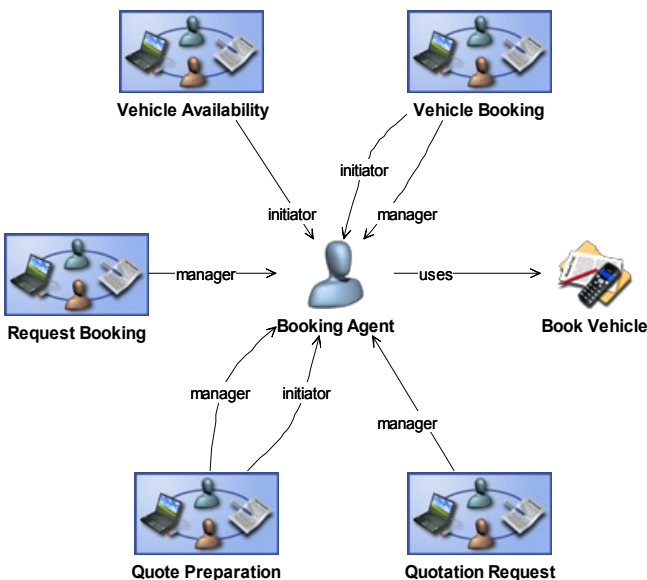


Example: Model > Place Related menu options

Select the items of interest from the available list and then click "OK". Click on the diagram to place the items that you have selected onto the diagram. Follow these steps again with a different item in focus to start building a tree that shows the traceability between items in your model.

The **Model > Place Related** pop-up menu also offers a number of specific item relationships including "Direct Relationships", "Derived Dependency" and "Association Link" on top of the "All" relationships option. This allows you to display only those items that share a specific relationship to the item in focus.

The association and dependency lines appear automatically as items are placed onto the diagram. The solid lines denote an association relationship and the blue dotted lines denote a derived relationship. All model items and relationships are captured and stored in the model repository when you create and link items to one another during your modelling exercise. The Place Related feature allows you to call on these from the repository, both saving you time and allowing you to see how a particular item could potentially impact other areas of your organisational model.



Example: What areas of the organisation are impacted by the Booking Agent?

HOLOCENTRIC 2008 TRAINING CALENDAR

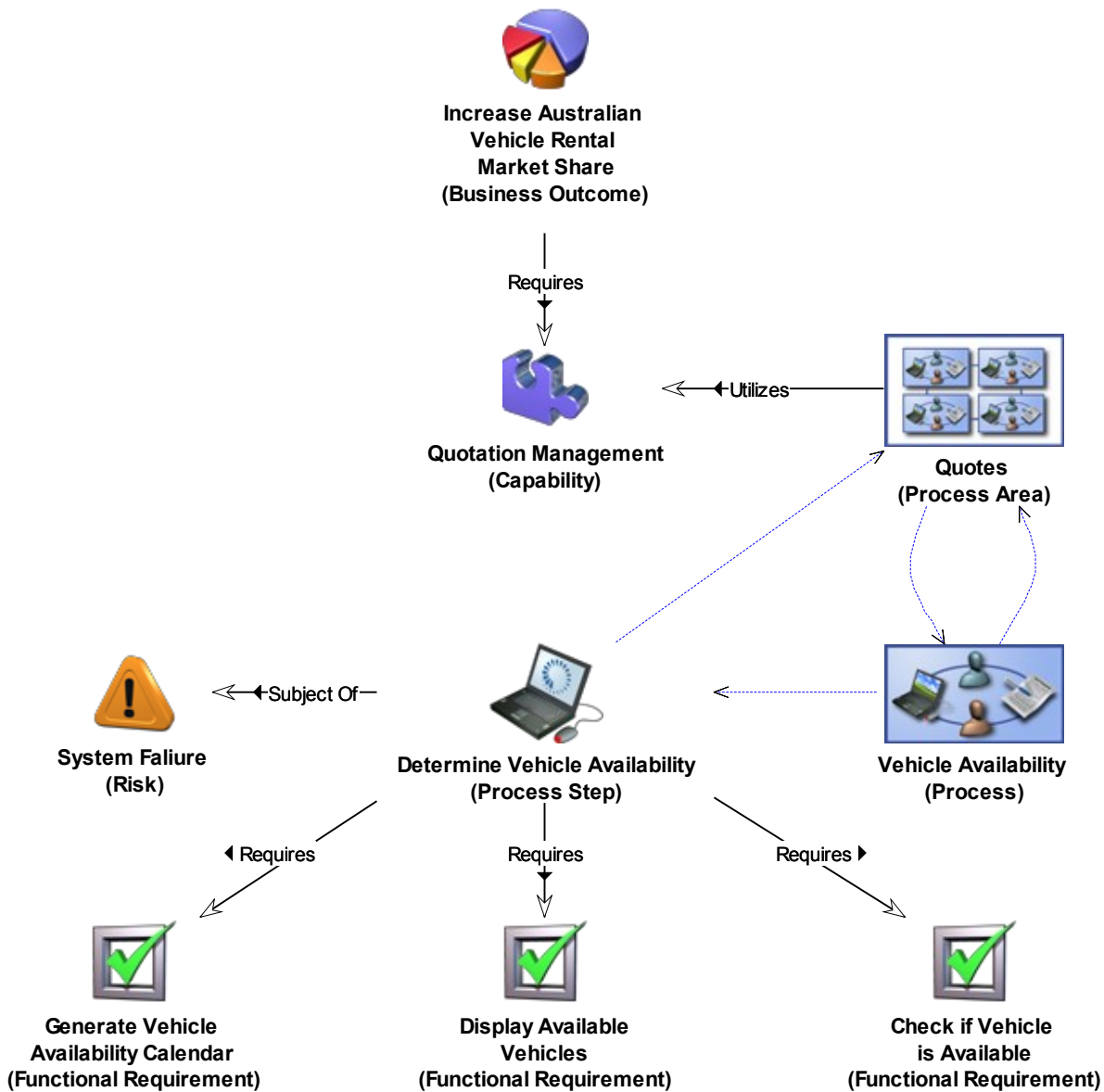
Holocentric regularly conducts public training courses in Sydney and Canberra. Courses can be arranged in other locations as required. Courses may be also held on your premises if this is more convenient. The maximum class size for a public training course is 10 people, but we aim to keep the number of students to between 6 and 8 to ensure each attendee receives individual attention.

The full 2008 Holocentric [training calendar](#) is available on our website along with [course outlines](#).

Here is the remainder of the year's training dates.

Month	BPM Introductory	System Requirements	Process Analysis
September			25 in Sydney
October	15-16 in Canberra		23 in Canberra
November	12-13 in Sydney, 19-20 in Canberra	26-27 in Sydney	
December	3-4 in Canberra		

Using Place Related - continued



Example: Traceability from Work Items to System Use Cases, Functional Requirements, Business Processes, Business Capabilities and ultimately Business Outcomes

SEMINARS – REDUCING RISK IN CHANGE

Many customers have used Holocentric Modeler to address issues on a project basis. Projects include the implementation of large IT systems, improvement in business performance, gathering requirements in preparation to go to market via an RFI or RFT. Some customers are taking information gathered on projects and creating a knowledgebase which has strategic benefit as an ongoing asset.

Come and hear how United Group are doing just that.

Melbourne 14 October

Canberra 15 October

Sydney 16 October

Invitations will be sent shortly

www.holocentric.com

MODELER 5.2.1 IS NOW AVAILABLE

Holocentric Modeler version 5.2.1 is now available for download from the Holocentric website. The new features/improvements are below.

- Improved Path Analysis Spreadsheet (for use with Process Analysis Accelerator):

- ◊ Identification and calculation of minimum, maximum and weighted average paths
- ◊ A top ten list of highest volume paths
- ◊ In-built help file for the definitions of spreadsheet fields

- Improved Interaction Diagram:

- ◊ Ability to increment or de-increment the sequence flow of recursive messages
- ◊ Added commands to the context menu of a message call for incrementing/de-incrementing
- ◊ Ability to display objects by alias name

- Improved Dependency Graph:

- ◊ Ability to display objects by alias name

- General improvements:

- ◊ Ability to insert scripts and links on diagram connection items
- ◊ Changed behaviour of Model > Place Related so that all items in the pick list are deselected

Modeler 5.2.1 can be downloaded from our website and full details of changes and fixes are contained in the Online Help file.

Holocentric Modeler - Path Analysis						
File:	C:\Users\Walter.Tran\Documents\Path Analysis\BPM-Pat					
Date:	9/09/2008					
Time:	3:39:15 PM					
Period:	232 (shifts)				Hours per shift:	7.5
Per Completed Cycle						
Path:	Elapsed	Duration	Cost	Adj.Cost	Vol./100	
Path.1	1.202	0.52605	\$53.79	\$53.79	4.32	
Path.2	0.885	0.47595	\$27.90	\$27.90	17.28	
Path.3	0.969	0.55945	\$33.66	\$33.66	4.32	
Path.4	1.002	0.59285	\$35.96	\$35.96	10.08	
Path.5	1.052	0.64295	\$37.28	\$37.28	3.92	
Path.6	1.019	0.60955	\$34.98	\$34.98	1.68	
Path.7	0.919	0.50935	\$30.20	\$30.20	25.92	
Path.8	0.969	0.55945	\$31.52	\$31.52	10.08	
Path.9	0.935	0.52605	\$29.22	\$29.22	6.72	
Path.10	1.286	0.60955	\$59.55	\$59.55	1.08	
Path.11	1.319	0.64295	\$61.86	\$61.86	2.52	
Path.12	1.369	0.69305	\$63.17	\$63.17	0.98	
Path.13	1.336	0.65965	\$60.87	\$60.87	0.42	
Path.14	1.236	0.55945	\$56.10	\$56.10	6.48	
Path.15	1.286	0.60955	\$57.42	\$57.42	2.52	
Path.16	1.253	0.57615	\$55.11	\$55.11	1.68	
Total					100.00	
Summary						
	Elapsed	Duration	Cost	Adj.Cost		
Min: Path.2	0.885	0.47595	\$27.90	\$27.90		
Max: Path.12	1.369	0.69305	\$63.17	\$63.17		
Avg Path	1.127	0.5845	\$45.54	\$45.54		
Wgt.Avg.	1.004	0.542	\$36.33			
Top 10 highest volume paths						
1	Path.7	25.92%				
2	Path.2	17.28%				
3	Path.8	10.08%				
4	Path.4	10.08%				
5	Path.9	6.72%				
6	Path.14	6.48%				
7	Path.3	4.32%				
8	Path.1	4.32%				
9	Path.5	3.92%				
10	Path.15	2.52%				
TOTAL		91.64%				

HOLOCENTRIC PROFILE

Naren Baliga, Senior Consultant

Naren has recently joined Holocentric after being with Optus for more than 7 years. At Optus Naren held the position of a Project Manager implementing large scale Business Process Re-engineering, Lean Six Sigma projects and has over 4 years of hand on experience in Lean Six Sigma space. Prior to his position as a Project Manager Naren held the position of a Business Analyst and was involved in some of the key IT projects at Optus. Naren joins the Sydney consulting team as a Senior Consultant and brings with him an array of experience in Information Technology, Business Process Modelling, Lean and Six Sigma. Based in Sydney Naren is looking forward to the challenge providing the highest standard of consulting and training services. Naren has a special interest in Business Performance Improvement projects.



Head Office - Australia
Level 2, 73 Walker Street
P.O. Box 62
North Sydney 2060
Australia
Level 8, 54 Marcus Street
Canberra 2600

Phone: +61 2 9957 3169
Fax: +61 2 9956 8071

Shape Your Future

